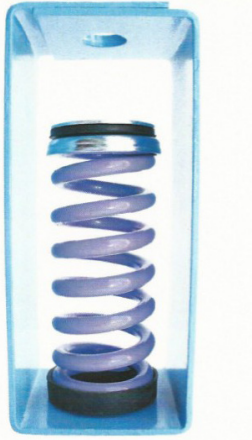


CATEGORY : SPRING HANGERS



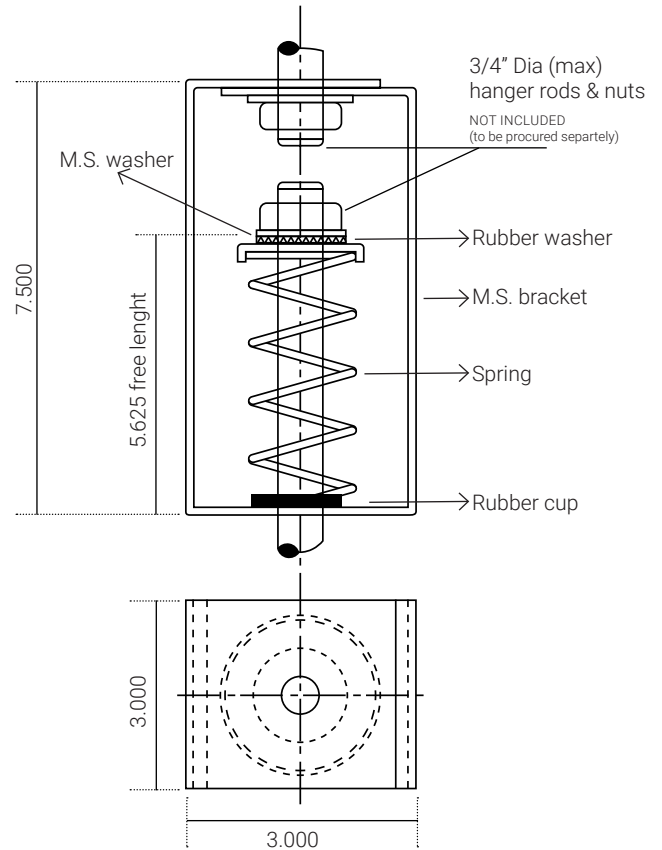
SERIES SHL1

DESCRIPTION

- Our spring hangers are fabricated using heavy duty steel.
- Springs are made from high quality and heavy spring steel.
- Springs are powder coated with color code for easy identification.
- Special rubber washers are provided for uniform distribution of load.

APPLICATION

Used for wide range of HVAC equipments such as fan oil units, air handling units, fans, pumps and chillers etc.



| model no. | rated load (lbs) | rated load (kgs) | deflection (in) | color code of spring | model no. | rated load (lbs) | rated load (kgs) | deflection (in) | color code of spring |
|-----------|------------------|------------------|-----------------|----------------------|-----------|------------------|------------------|-----------------|----------------------|
| SHL1 55 | 55 | 25 | 1.40 | pink | SHL1 600 | 600 | 272 | 1.00 | purple |
| SHL1 75 | 75 | 34 | 1.30 | black | SHL1 735 | 735 | 334 | 0.80 | d. green |
| SHL1 112 | 112 | 51 | 1.30 | blue | SHL1 865 | 865 | 392 | 0.80 | grey |
| SHL1 150 | 150 | 68 | 1.30 | brown | SHL1 1000 | 1000 | 454 | 1.00 | orange |
| SHL1 215 | 215 | 98 | 1.20 | white | SHL1 1100 | 1100 | 500 | 1.00 | l. brown |
| SHL1 300 | 300 | 136 | 1.20 | yellow | SHL1 1240 | 1240 | 562 | 1.00 | l. geren |
| SHL1 400 | 400 | 181 | 1.20 | red | SHL1 1465 | 1465 | 665 | 1.00 | l. blue |
| SHL1 500 | 500 | 227 | 1.10 | d. brown | | | | | |

NOTE : Research and development is a continuous process with us as improvements are made from time to time, specifications/ dimensions may change without notice. Tolerances in dimensions are as per international standards.