

CATEGORY : SPRING HANGERS



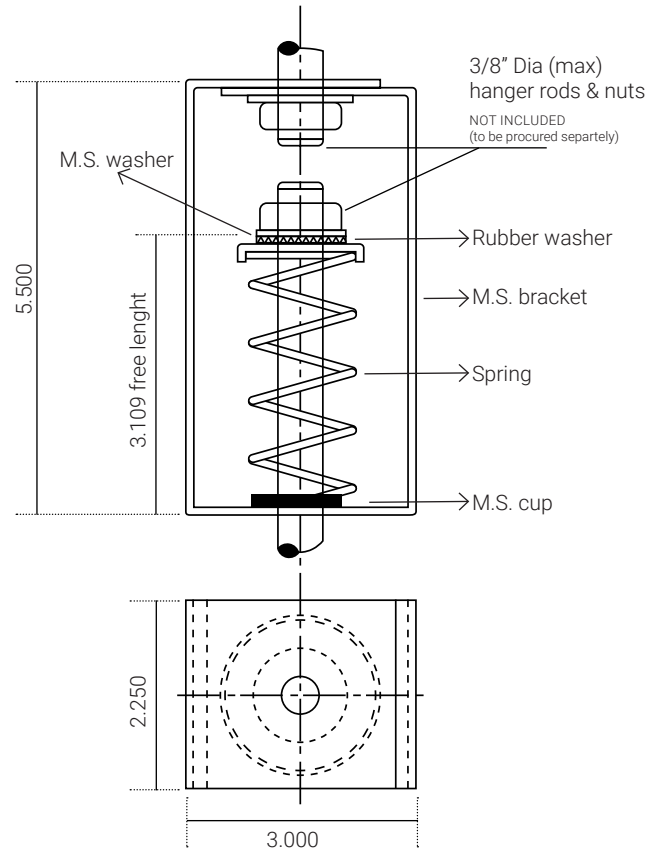
SERIES SHM

DESCRIPTION

- Our spring hangers are fabricated using heavy duty steel.
- Springs are made from high quality and heavy spring steel.
- Springs are powder coated with color code for easy identification.
- Special rubber washers are provided for uniform distribution of load.

APPLICATION

Used for wide range of HVAC equipments such as fan oil units, air handling units, fans, pumps and chillers etc.



model no.	rated load (lbs)	rated load (kgs)	deflection (in)	color code of spring
SHM 40	40	18	1.25	pink
SHM 65	65	30	1.25	red
SHM 100	110	50	1.20	blue
SHM 175	175	80	1.00	brown
SHM 245	245	110	0.80	white
SHM 330	330	150	0.50	yellow
SHM 465	465	210	0.50	black
SHM 660	660	300	0.50	green

NOTE : Research and development is a continuous process with us as improvements are made from time to time, specifications/ dimensions may change without notice. Tolerances in dimensions are as per international standards.