

CATEGORY : SPRING HANGERS



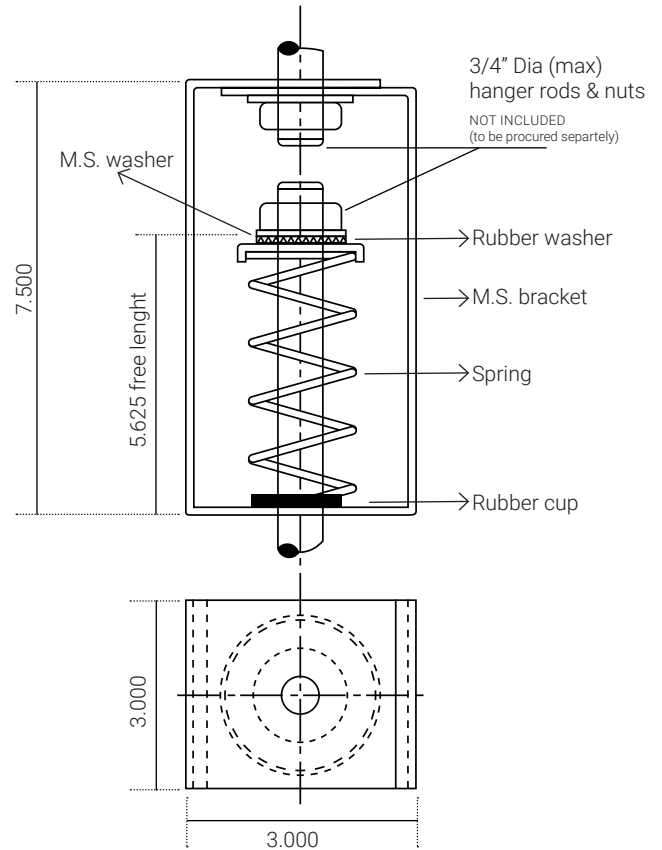
SERIES SHL1

DESCRIPTION

- Our spring hangers are fabricated using heavy duty steel.
- Springs are made from high quality and heavy spring steel.
- Springs are powder coated with color code for easy identification.
- Special rubber washers are provided for uniform distribution of load.

APPLICATION

Used for wide range of HVAC equipments such as fan oil units, air handling units, fans, pumps and chillers etc.



model no.	rated load (lbs)	rated load (kgs)	deflection (in)	color code of spring	model no.	rated load (lbs)	rated load (kgs)	deflection (in)	color code of spring
SHI1 55	55	25	1.40	pink	SHL1 600	600	272	1.00	purple
SHI1 75	75	34	1.30	black	SHL1 735	735	334	0.80	d. green
SHI1 112	112	51	1.30	blue	SHL1 865	865	392	0.80	grey
SHI1 150	150	68	1.30	brown	SHL1 1000	1000	454	1.00	orange
SHI1 215	215	98	1.20	white	SHL1 1100	1100	500	1.00	l. brown
SHI1 300	300	136	1.20	yellow	SHL1 1240	1240	562	1.00	l. green
SHI1 400	400	181	1.20	red	SHL1 1465	1465	665	1.00	l. blue
SHL1 500	500	227	1.10	d. brown					

NOTE : Research and development is a continuous process with us as improvements are made from time to time, specifications/ dimensions may change without notice. Tolerances in dimensions are as per international standards.