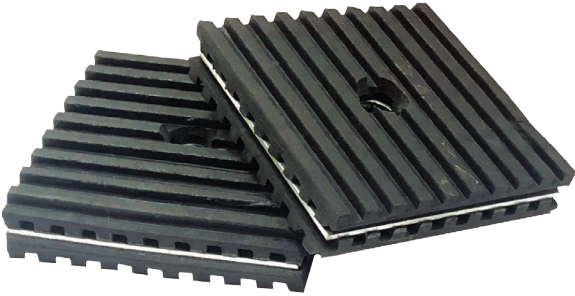


CATEGORY : DAMPING PADS / RUBBER STEEL RUBBER



RSR-H

DESCRIPTION

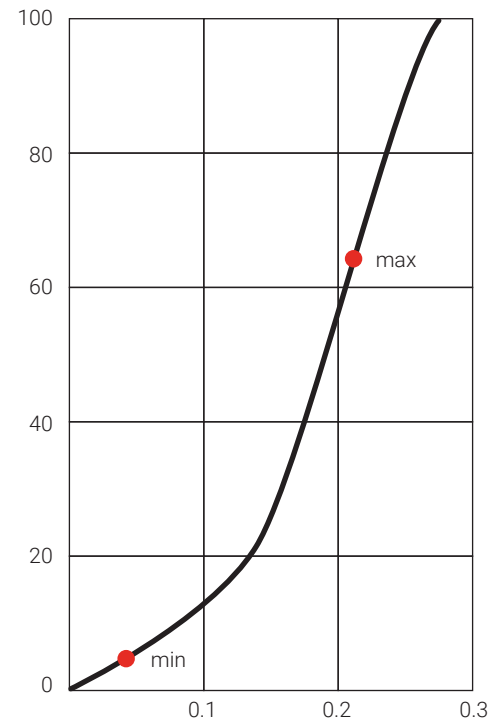
- Maximum load: 60 lbs/square inch, Deflection: 0.21 inch
- Multi-layers ribbed rubber pads separated by steel plate for uniform load distribution.
- Multi-layers are recommended where vibration and noise control is required.
- No bolting required.
- Simple field installation.

APPLICATION

Used for pumps, motors, air-conditioning units, generators, fans, chillers and cooling towers.

model	product name	thickness (in)	hole (in)
RSR	Rubber steel rubber	7/8	5/8

size (in)	rated load
4 x 4	800



NOTE : Research and development is a continuous process with us as improvements are made from time to time, specifications/ dimensions may change without notice. Tolerances in dimensions are as per international standards.