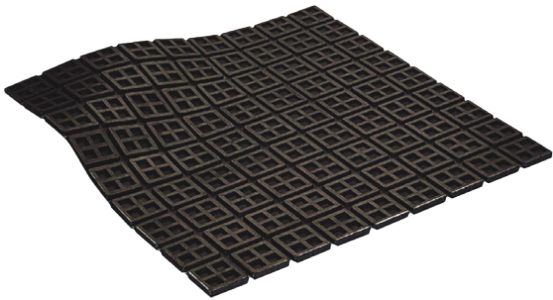


CATEGORY : DAMPING PADS



SERIES DP

DESCRIPTION

- Domino design: built-in suction cups.
- Pattern: domino.
- Design allows for easy cutting.
- Simple field installation.
- Working range for DP ranging from 15 to 45 PSI.

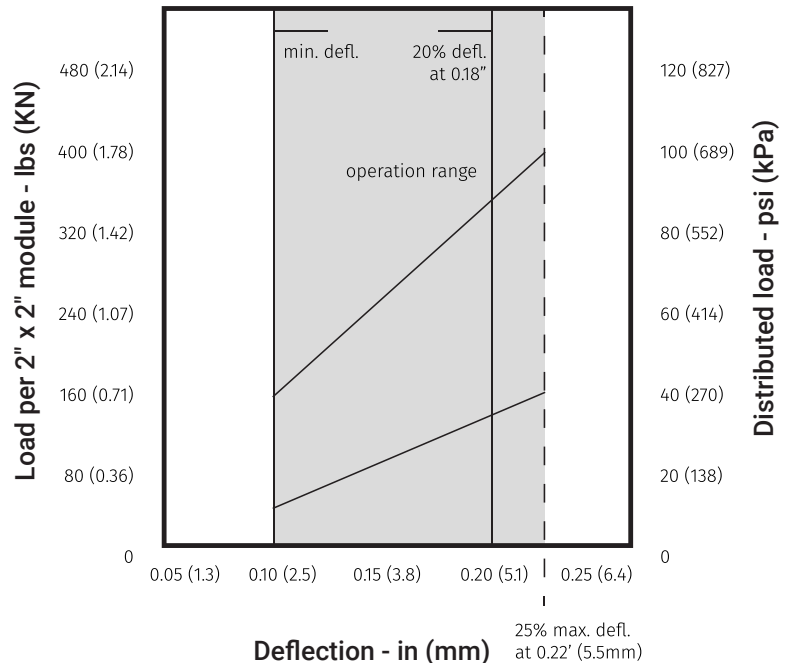
APPLICATION

- Where bolting is to be avoided.
- Minor, non-critical vibration conditions.
- Used for pumps, motors, AC units, generators, etc.
- Recommended for acoustic problem applications.

model	product name	thickness (in)
DP	Domino pads	3/4

size (in)	loaded capacity (lbs)
2 x 2	120
2 x 4	240
2 x 6	360
4 x 4	480
4 x 6	720
6 x 6	1080
10 x 18	5400
18 x 18	9720

Load vs Deflection



NOTES

- Full size sheets are 18 x 18 x 3/s" (460 x 460 x 22 mm).
- Each sheet has 81 2" x 2" (50 x 50 mm) modules.
- Modules can be easily cut into desired size using a utility knife.
- NP is made of high strength virgin neoprene at minimum 2750 psi (18.96 MPa) tensile strength capacity.
- Recommended load is at 20% deflection (0.18", 4.5 mm).
- Maximum load is at 25% deflection (0.22", 5.6 mm).

Min. Load & Defl.	Design load & Defl. (20% height)	Max load & Defl. (25% height)
15 psi (103 kPa)	30 psi (207 kPa)	40 psi (276 kPa)
0.1" (2.5 mm)	0.18" (4.5 mm)	0.22" (5.5mm)

NOTE : Research and development is a continuous process with us as improvements are made from time to time, specifications/ dimensions may change without notice. Tolerances in dimensions are as per international standards.