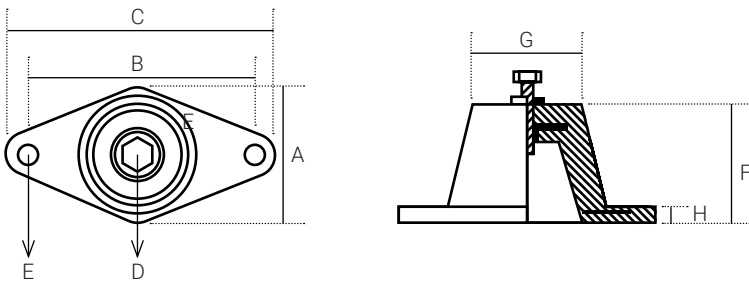


CATEGORY : DAMPING PADS

## RUBBER FLOOR MOUNTS



### DESCRIPTION

- Suitable for mounting on floor.
- Ribbed/ Non skid design used for providing grip with the surface. But it is recommended to fasten the product for better results.
- Steel re-enforced rubber for better strength.
- Threading provided at top for fastening.
- Material: EDPM neoprene
- RMD3 & RMD4 are rectangle base type.

### APPLICATION

Used for wide range of HVAC equipments such as compressors, air handling units, fans, pumps and chillers, etc.

model no.	rated load (lbs)	rated load (kgs)	deflection (in)	colour code of spring	dimensions in MM							
					A	B	C	D	E	F	G	H
RMD1 33	33	15	0.32	blue	45	60	80	6	8.5	32	35	5
RMD1 44	44	20	0.32	red	45	60	80	6	8.5	32	35	5
RMD1 66	66	30	0.32	green	45	60	80	6	8.5	32	35	5
RMD1 110	110	50	0.32	black	45	60	80	6	8.5	32	35	5
RMD2 130	130	60	0.40	blue	60	76	98	10	8.5	45	45	5.5
RMD2 165	160	75	0.40	red	60	76	98	10	8.5	45	45	5.5
RMD2 220	230	100	0.40	green	60	76	98	10	8.5	45	45	5.5
RMD2 385	370	175	0.40	black	60	76	98	10	8.5	45	45	5.5
RMD3 200	200	90	0.47	blue	60	80	102	10	12	50	45	6.5
RMD3 275	275	125	0.47	red	60	80	102	10	12	50	45	6.5
RMD3 385	385	175	0.47	green	60	80	102	10	12	50	45	6.5
RMD3 500	500	225	0.47	black	60	80	102	10	12	50	45	6.5
RMD4 770	770	350	0.47	blue	92	120	150	12	14	90	70	10
RMD4 990	990	450	0.47	red	92	120	150	12	14	90	70	10
RMD4 1320	1320	600	0.47	green	92	120	150	12	14	90	70	10
RMD4 2200	2200	1000	0.47	black	92	120	150	12	14	90	70	10

**NOTE :** Research and development is a continuous process with us as improvements are made from time to time, specifications/ dimensions may change without notice. Tolerances in dimensions are as per international standards.