

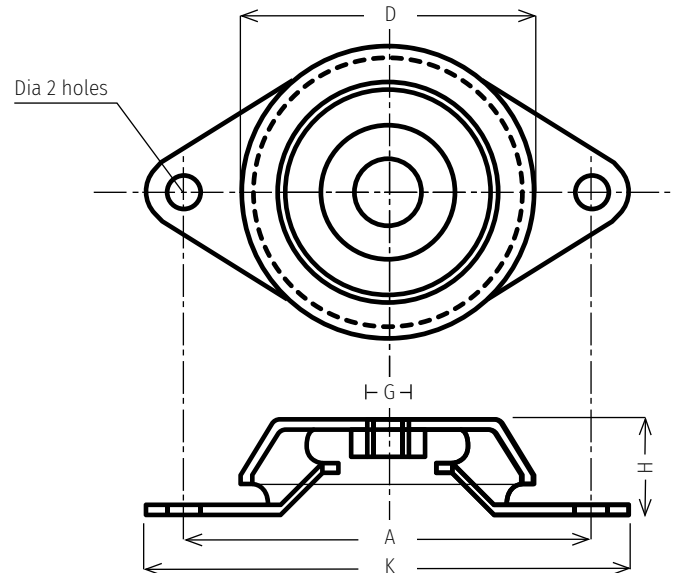
## VIB 1-5

### DESCRIPTION

\*Seismic rubber vibration isolator  
Installation of equipments on VIB DAMPERS is the modern method of installing equipment which must be protected from shock and vibrations which are inherent in many environments. In mobile applications the equipments remains steady and isolated from the base vibrations during transit.

### APPLICATION

- Diesel generating sets mounts
- Air compressors mounts (bath reciprocating type and screw compressors)
- Fan mounts and motor unit mounts
- Centrifuges mounts
- Air conditioning unit mounts
- Combustion engine mounts



### PHYSICAL DIMENSIONS

All dimensions are in mm

VIB damper	Cup Dia "D"	PCD betw. 2 Holes A	Base length "K"	Height "H"	Dia 2 holes "d"	Tapping size "G"
VIB1	61.5	84	110	35	9	M12
VIB2	79	110	130	30	9	M10
VIB3	108	144	172	38	13.5	M16
VIB4	121	158	186	42	13.5	M16
VIB5	142	182	212	48	13.5	M16

### TECHNICAL SPECIFICATIONS OF VIB DAMPERS

VIB damper	Max load (Kg)	Deflection (mm)	Print marks	VIB damper	Max load (Kg)	Deflection (mm)	Print marks
VIB1-100	100	2	Blue	VIB3-450	450	4	Red
VIB1-150	150	2	Grey	VIB3-650	650	4	Green
VIB1-200	200	2	Red	VIB4-300	300	4	Blue
VIB1-300	300	2	Green	VIB4-400	400	4	Grey
VIB2-120	120	2	Blue	VIB4-600	600	4	Red
VIB2-150	150	2	Grey	VIB4-750	750	4	Green
VIB2-180	180	2	Red	VIB4-300	500	6	Blue
VIB2-280	280	2	Green	VIB4-400	700	6	Grey
VIB3-275	275	4	Blue	VIB4-600	1200	6	Red
VIB3-375	375	4	Grey	VIB4-750	1500	6	Green

Note  
Research and development is a continuous process with us as improvements are made from time to time, specifications/ dimensions may change without notice. Tolerances in dimensions are as per international standards.

DISTRIBUTED BY:

**DEFLECTION**